

BITMAIN

AntMiner S4+ Manual

Contents

1	Overview	3
2	Features.....	3
3	Connect to Miner	3
4	Miner Configuration	6
4.1	Pool Setting	6
4.2	Frequency Modification	6
5	Miner Status	7
6	System Configuration and status.....	7
6.1	System Upgrading	7
6.2	Password Modification.....	8
6.3	Software Version Checking.....	9
6.4	Restore Initial Setting	9

1 Overview

Bitmain is introducing the newest miner: the AntMiner S4+. More powerful and efficient than its predecessor, the S4+ packs quite a punch. It uses the state of the art BM1382 chip powered by ultra-low power 28nm technology, with 2570Gh/s hash rate. S4+ will be shipped out with built-in PSU and it's tested and configured prior to shipping to make it easier for customers to set up.



Please note:

1. **The included PSU cannot be used in countries with a mains power voltage lower than 205V. The PSU will not start below this voltage.**
2. **Power line is not included, please find one with at least 10A in your local market.**

2 Features

Ideal Hash Rate (GH/s)	2570
Default chip clock (M)	200
Estimate power on wall (W)	1480
Estimate efficiency on wall (J/GH)	0.58
Dimensions (mm)	432 x 442 x 133
Weight (kg)	14.4

3 Connect to Miner

Step 1. The default DHCP network protocol distributes IP addresses automatically. Please download [IPReporter.zip](#) from minerlink.com, then please follow below steps to find out the IP of

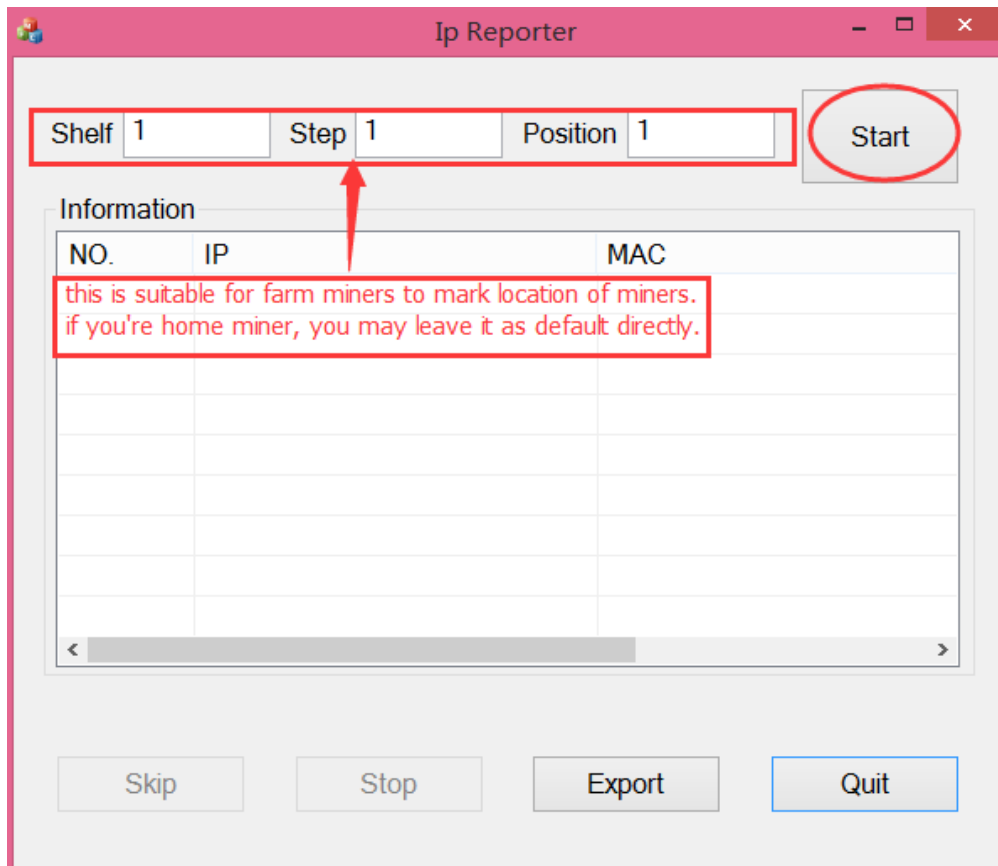
the miner.

Note: when finding the IP address, the PC and miner should be connected to the same router via Ethernet wire.

1. Extract the file and double click 'IPReporter.exe'.

The 'Shelf, Step, Position' options are suitable for farm miners to mark the location of the miners. For home miners, it can be left as default.

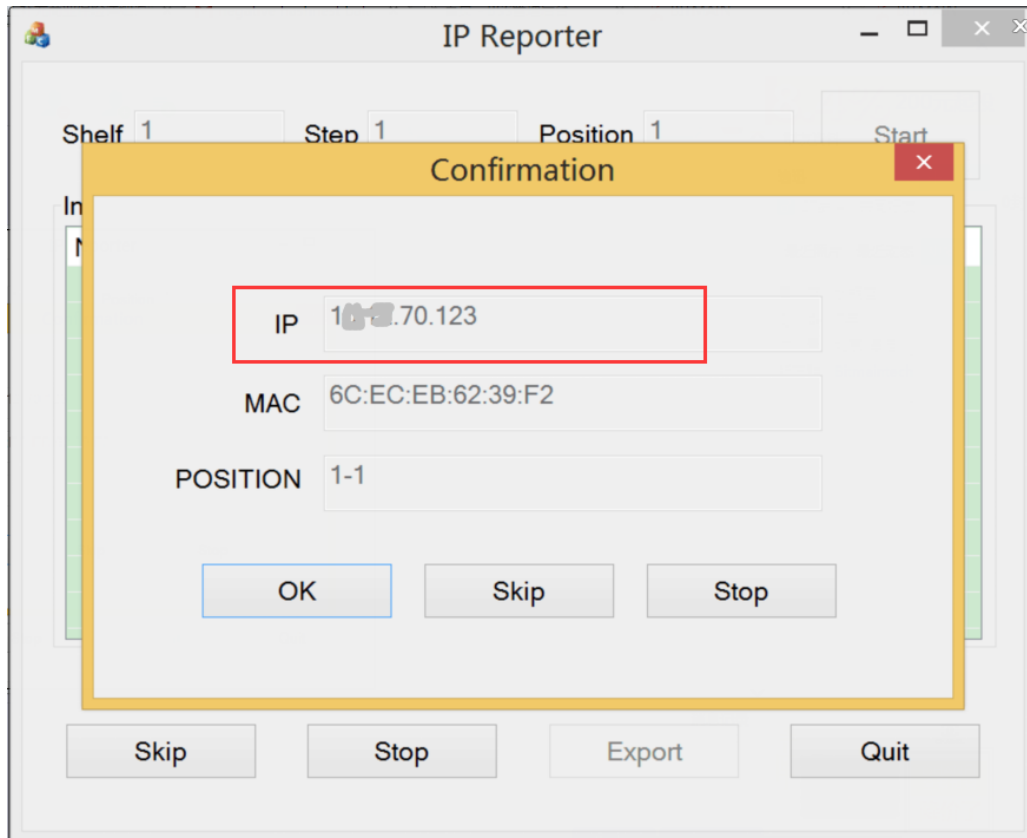
Then click 'Start'.



2. Press the raised IP Reporter button on right top corner of panel, next to the green and red LED light, you'll hear a beep sound:

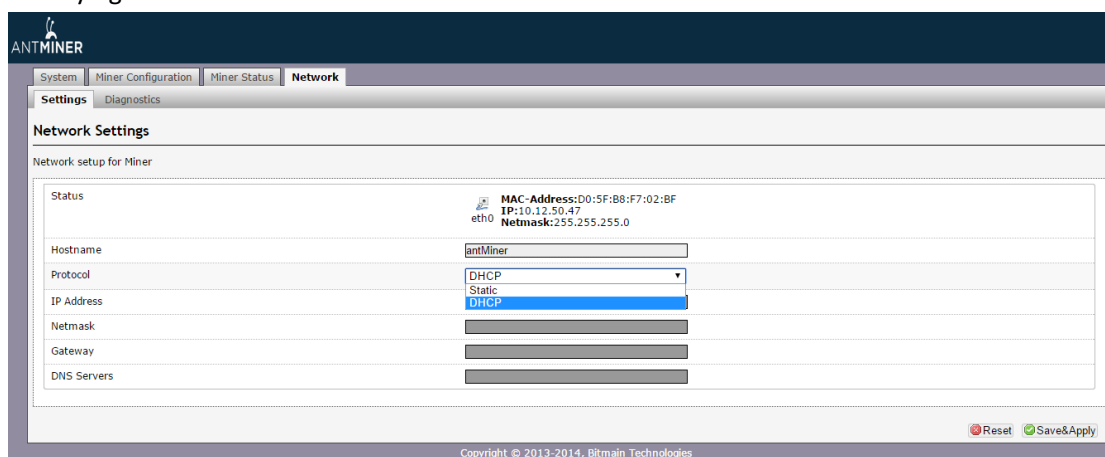


3. Check your PC, you'll see the IP address showing in the pop-up window.



Step 2. Enter the IP address provided into your WEB browser and proceed to login using 'root' for both the username and password.

In the 'Network' section, you can assign a 'Static' IP address if you like. Click 'Save&Apply' after modifying it.



4 Miner Configuration

4.1 Pool Setting

You can configure your miner through 'Miner Configuration->General Settings'.

Pool URL- Enter the URL of your desired pool in this column.

Worker- This is your worker ID on the selected pool.

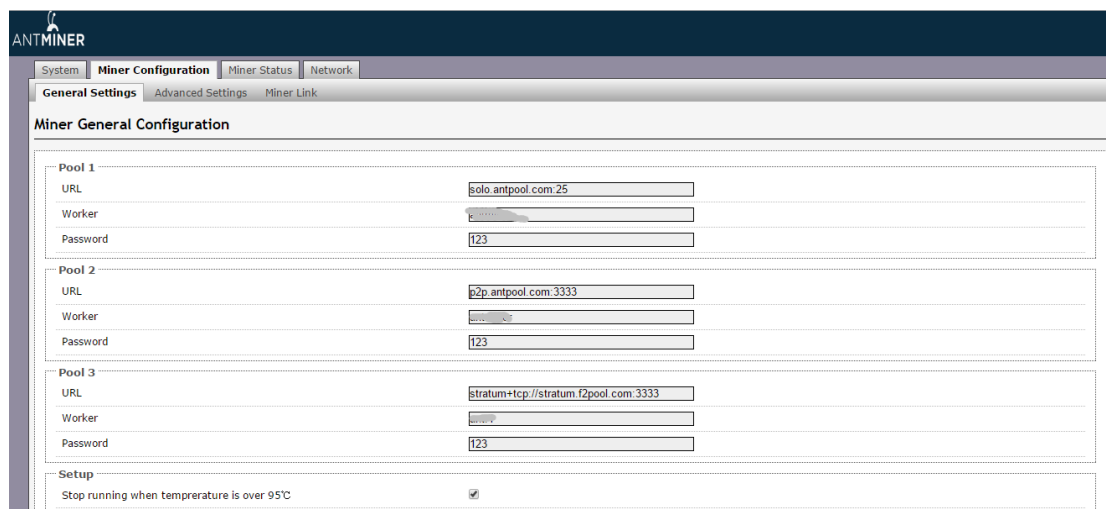
Password- This is the password for your selected worker.

Comment:

4.1.1 The AntMiner S4+ can be set up with three mining pools, with decreasing priority from the first pool (pool 1) to the third pool (pool 3). **The pools with low priority will only be used if all higher priority pools have gone offline.**

4.1.2 When 'Stop running when temperature is over 95°C' is checked, the miner will stop mining when the temperature exceeds 95°C to protect the miner. If it's unchecked, the miner will still mine even in high temperature.

Click 'Save & Apply' to save and restart miner.



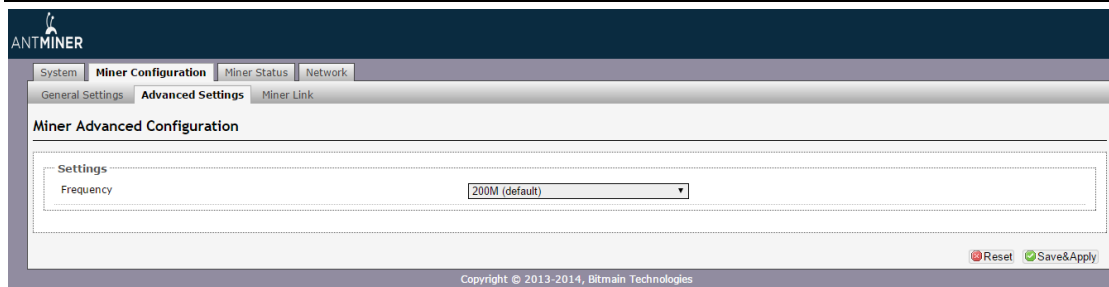
Pool	URL	Worker	Password
Pool 1	solo.antpool.com:25		123
Pool 2	o2p.antpool.com:3333		123
Pool 3	stratum+tcp://stratum.f2pool.com:3333		123

Setup

Stop running when temperature is over 95°C

4.2 Frequency Modification

You are able to modify the frequency value through 'Miner Configuration->Advanced Settings'. The default frequency for the AntMiner S4+ is 200M.



5 Miner Status

You can check the operating status of your miner on 'Miner Status' page.

ASIC#: Number of chips detected in the chain

Frequency: ASIC frequency setting

Temp: Temperature, centigrade

ASIC status: o stands for OK, x stands for error.

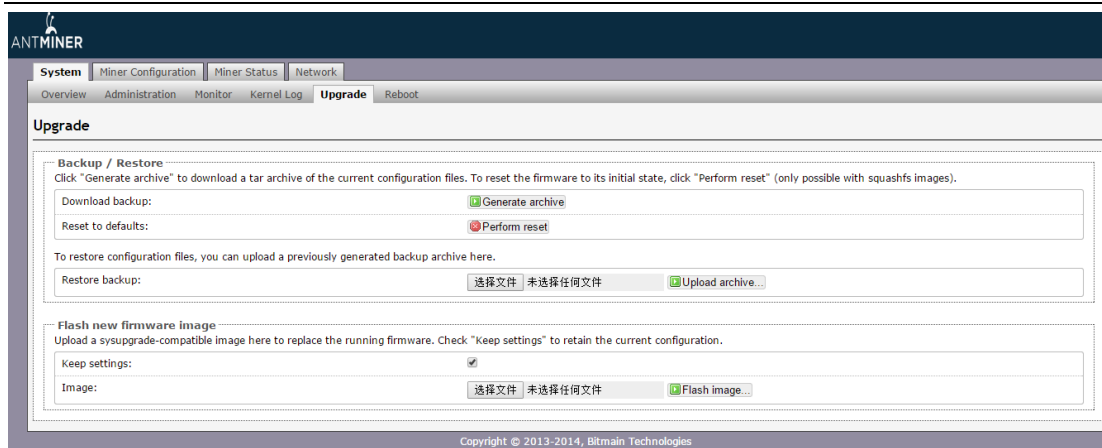
Chain#	ASIC#	Frequency	Temp	ASIC status
1	51	200	59	ooooooooooooooooooooo oooooo oooooooooo oooooooooo oooooooooo
2	51	200	54	ooooooooooooooooooooo oooooo oooooooooo oooooooooo oooooooooo
3	51	200	57	ooooooooooooooooooooo oooooo oooooooooo oooooooooo oooooooooo
4	51	200	58	ooooooooooooooooooooo oooooo oooooooooo oooooooooo oooooooooo

Fan#	Fan1	Fan2	Fan3	Fan4
Speed (r/min)	4,080	4,080	3,960	3,960

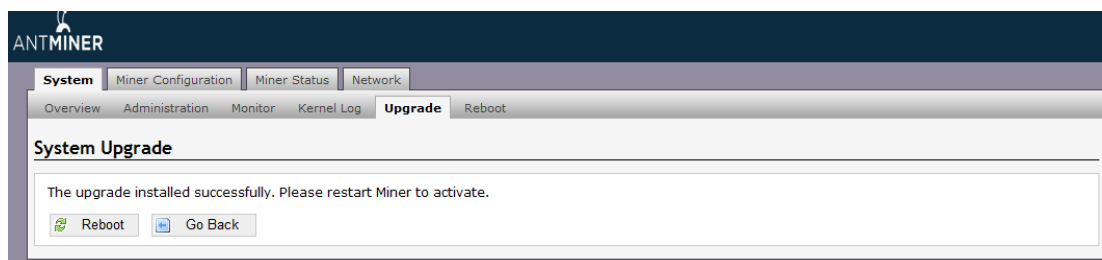
6 System Configuration and status

6.1 System Upgrading

You can upgrade the miner's firmware on 'System->Upgrade' page.



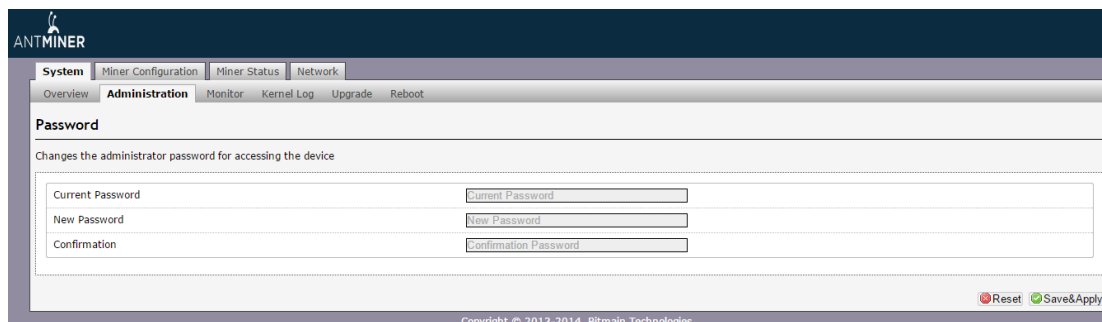
'Keep setting' is chosen by default and should be enabled if you want to keep your current settings. You should deselect this option if you are trying to return the miner to default settings. Click 'Browse' button to choose upgrade file. Select the upgrade and click the 'Flash image...' button. The interface will display if the firmware can be upgraded and download the software. During the upgrade process, you need to **wait patiently, and must keep power on, otherwise, the AntMiner can only be fixed with returned to factory.** You will see below screenshot after upgrading successfully.



Clicking the 'Reboot' button will restart the miner so it can load the new software. Clicking 'Go Back' will keep the AntMiner mining, before switching to the new software when it is restarted next time or power cycled.

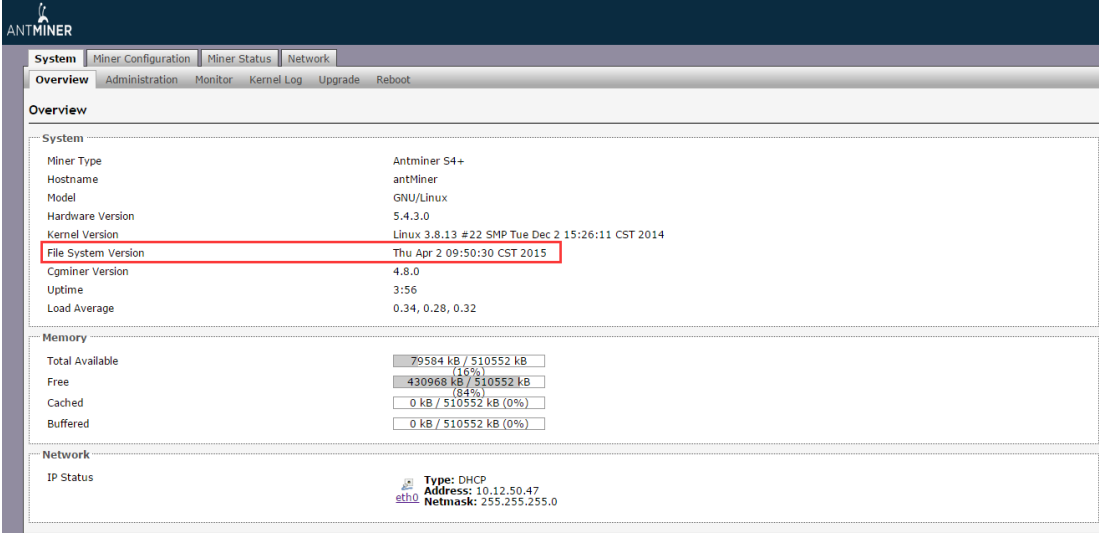
6.2 Password Modification

The AntMiner login password can be changed on the 'System->Administration' page. Once modified, press 'Save&Apply' to save the new password.



6.3 Software Version Checking

You can check which version of the software you are currently running on the 'System->Overview' page. 'File System version' displays the date of the firmware your miner use. In the example below, the miner is using 20150402 firmware.



The screenshot shows the AntMiner web interface with the 'System' tab selected. The 'Overview' section displays the following system information:

Miner Type	Antminer S4+
Hostname	antMiner
Model	GNU/Linux
Hardware Version	5.4.3.0
Kernel Version	Linux 3.8.13 #22 SMP Tue Dec 2 15:26:11 CST 2014
File System Version	Thu Apr 2 09:50:30 CST 2015
Cgminer Version	4.8.0
Uptime	3:56
Load Average	0.34, 0.28, 0.32

Memory usage is shown as follows:

Total Available	79584 kB / 510552 kB (16%)
Free	430968 kB / 510552 kB (84%)
Cached	0 kB / 510552 kB (0%)
Buffered	0 kB / 510552 kB (0%)

Network status is shown as follows:

IP Status	Type: DHCP Address: 10.12.50.47 Netmask: 255.255.255.0
-----------	--

6.4 Restore Initial Setting

There is a 'Reset' button on the left hand side of the IP Reporter button, press and hold the button for 5 seconds in order to restore to the default settings and reboot. The red LED will flash once every 15 seconds automatically if the reset is operated successfully.

